



# Open Distance Learning Programmes

## Degrees in **THEOLOGY**

It all starts here®



NORTH-WEST UNIVERSITY  
YUNIBESITI YA BOKONE-BOPHIRIMA  
NOORDWES-UNIVERSITEIT

®

Information in this publication is subject to change and has been compiled as a general introduction and orientation only. The North-West University does not accept any responsibility for errors and omissions regarding this information. The official year-book of the Faculty of Theology of the North-West University should always be consulted when a programme is selected for a specific field of study. The relevant yearbook may be obtained from the Admissions Office of the NWU upon request, or downloaded from the NWU website ([www.nwu.ac.za](http://www.nwu.ac.za)).



## INDEX

THEOLOGY @ NWU: FACULTY OF THEOLOGY	3
METHODS OF DELIVERY AND STUDY CENTRES	5
Open Distance Learning	5
Learning Support Centres	5
Language Medium	5
Learning Support Centres	6
PROGRAMMES	7
BTh PROGRAMMES	7
Admission Criteria	7
Duration	7
Cost	7
BTh in Biblical Studies	8
BTh in Church Ministry	8
BTh in Theological Foundations	11
BTh	12
HONS BA IN THEOLOGY	13
Admission Criteria	13
Duration	13
Cost	13
Curriculum	13
Application	14
Registration	14
CALL CENTRE AND CUSTOMER CARE	14

## THEOLOGY @ NWU: FACULTY OF THEOLOGY

The NWU Potchefstroom Campus, Faculty of Theology's Unit for Open Distance Learning creates the opportunity for theological education for all. If you are a theological student or wish to become a missionary or youth worker or pastor in any of the reformed, evangelical or related traditions, or if you are already practising as a religion professional and want to further your theological education, the Faculty of Theology's Unit for Open Distance Learning offers a variety of academic theological programmes without you having to relocate to a NWU Campus.

This is a unique and creative way, in which you yourself determine the place, time and tempo of your learning; you can give new momentum to your career through professional training. Electronic as well as telephonic support is available, with personal contact facilitation at the open learning centres.

### **This is unique because**

- It allows you to study full-time while you work.
- It gives you the opportunity for vocationally directed training that speeds up your career.
- You can determine your own tempo of learning on the basis of your circumstances.
- It is affordable.
- You will receive study support.



## BTH PROGRAMMES

### **Admission Criteria**

The requirement for all BTH qualifications is a Senior Certificate that complies with the minimum statutory matriculation requirements for admission to a bachelor's degree and an APS score of 24 or higher.

### **Duration**

The minimum study period for this qualification is three years of study. The maximum period is four years. In extraordinary cases, students can apply for an extension of the study period.

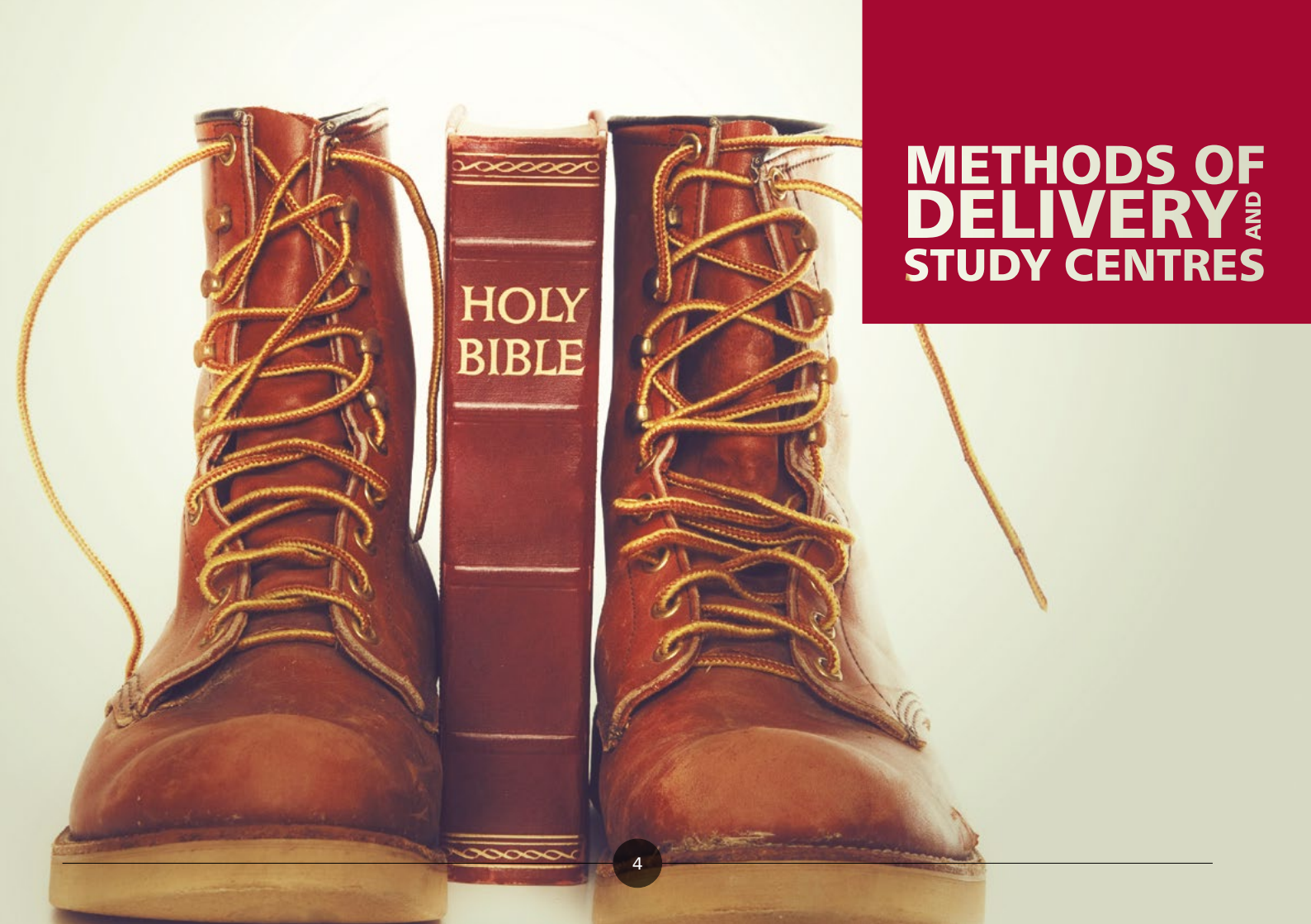
### **Learning Support Centres**

If you prefer to enroll via an Learning Support Centre, you will receive contact facilitation provided by facilitators appointed by the NWU.

### **Cost**

Email [puk-studyfees@nwu.ac.za](mailto:puk-studyfees@nwu.ac.za) or phone 018 299 2667/8/9 for a quote of the qualification programme you are interested in.

# METHODS OF DELIVERY AND STUDY CENTRES

A pair of brown leather boots with yellow laces flanking a red leather-bound Holy Bible. The Bible is standing upright, and the text "HOLY BIBLE" is embossed on its spine. The boots are positioned on either side of the Bible, with their laces crisscrossing up the front. The background is a plain, light-colored surface.

HOLY  
BIBLE

# IT ALL STARTS HERE...

---

The NWU's Unit for Open Distance Learning offers Theology qualifications through three methods:

## **Open Distance Learning**

Students, who due to circumstances, cannot enroll at one of the NWU campuses for a contact programme, can enroll for Theology studies through the Unit for Open Distance Learning.

The qualification programme is completed on a correspondence basis with direct contact between the lecturer and the student through the NWU's eFundi platform and the whiteboard broadcasts. Study material is available electronically. Examinations are written at NWU examination centres nationwide.

## **Learning Support Centres**

Students who are not enrolled as contact students at one of the NWU campuses, but who would like to receive additional facilitation, can enroll for studies at the NWU through one of the Learning Support Centres. Additional facilitation is provided by NWU-appointed facilitators at the Learning Support Centres. Study material is available electronically.

All examinations are conducted at the centre itself. All examination papers are set, assessed and moderated by NWU staff members.

## **Language Medium**

Open Distance Learning studies, are available in both Afrikaans and English.

# STUDY CENTRES

## Learning Support Centres

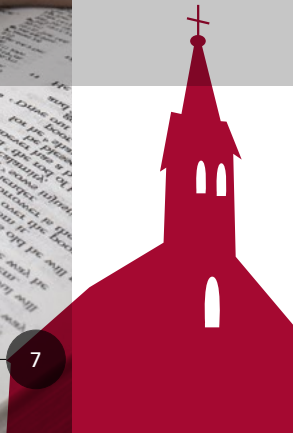
At the time of printing, the following Learning Support Centres have been functional, with quite a number in the process of becoming operational:

Location	Institution
Johannesburg, South Africa	Church Ministries Institute (Gauteng)
King Williamstown, South Africa	Dumisani Theological Institute and Bible School
Nairobi, Kenya	Bridgeworld College
Randburg, South Africa	John Wycliffe Theological College
Aversa, Italy	Facolta Pentecostale di Scienze Religiose
Centurion, South Africa	AFM of South Africa
Irene, South Africa	Full Gospel Church of God College
Kitwe, Zambia	St John's Anglican Seminary
Lenasia-South, South Africa	Lifechange Training Centre
Lisbon, Portugal	Instituto Bíblico Português
Kitwe, Zambia	St John's Anglican Seminary
Parow, South Africa	Cape Town Biblical College
Polokwane, South Africa	Lede in Christus
Polokwane, South Africa	Taberna Dei Academy
Pretoria, South Africa	Docenda



# PROGRAMMES

1. BTH IN BIBLICAL STUDIES
2. BTH IN CHURCH MINISTRY
3. BTH IN THEOLOGICAL FOUNDATIONS
4. BTH
5. HONS BA IN THEOLOGY



# 1.

## BTh in Biblical Studies

This programme provides a basic introduction and overview of Christian Theology and Counselling, focusing on Biblical Studies (Old Testament and New Testament). Successful completion of this programme provides articulation possibilities to Hons BA in Theology.



FIRST SEMESTER		
Year level 1	Year level 2	Year level 3
Greek Language Competence	Dogmatics: From the Doctrine of Scripture to the Doctrine of Sin	Dogmatics: Modern Theologians and their Value for Practical Ministry
Biblical Hebrew Linguistic Skills	Scriptural Fundamentals of Homiletics	Theory of Intercultural Communication of the Gospel
Introduction to the New Testament: History and General Canonics	The Relationship between Mission and Theology	General Canonics, Pauline Epistles
Introduction to the Old Testament Origin and Structure	Introduction to Exegesis of the New Testament and its Socio-historical Context	Interpretation of the Writings (Ketubim)
Church History: The Reformation	Introduction to Interpretation of the Old Testament and the Pentateuch	Philosophy: Reality and Knowledge
Introduction to Theology		
SECOND SEMESTER		
Year level 1	Year level 2	Year level 3
Introduction to Academic Literacy	Dogmatics: Christology to Eschatology	Dogmatics: Calvin's Institutes
Fundamentals of Church and Dogma History	Mission as an Africa Initiative	Introduction to Theological Hermeneutics
The Synoptic Gospels	Acts, the General Epistles, Hebrews and the Pauline Epistles	The Reformation and Modern Church and Dogma History
Narrative Text: The Early Prophets	Prophetic Literature	Key Themes of Revelation History, the Johannine Books
Biblical Counselling	History of Philosophy	Old Testament: Special Themes; the Old Testament and Practical Ministry
<b>Total credits: 412</b>		

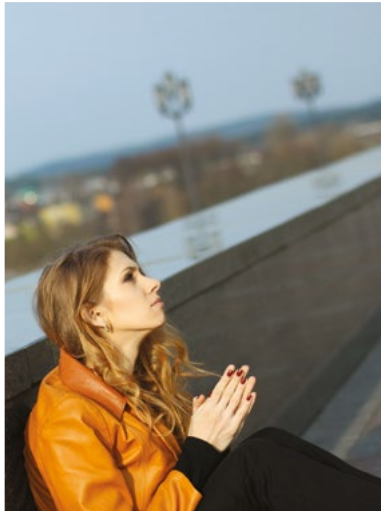




# 2.

## BTh in Church Ministry

The programme provides a basic introduction and overview of Christian Theology and Ministry, focused on Practical Theology. Successful completion of this programme provides articulation possibilities to Hons BA in Theology.



FIRST SEMESTER		
Year level 1	Year level 2	Year level 3
Greek Language Competence	Dogmatics: From the Doctrine of Scripture to the Doctrine of Sin	Early Christian and Mediaeval Churches
Biblical Hebrew Linguistic Skills	Fundamentals of Homiletics	Theory of Intercultural Communication of the Gospel
Introduction to the New Testament: History and General Canonics	The Relationship between Mission and Theology	Pastoral Cases in Counselling
Introduction to the Old Testament: Origin and Structure	Introduction to Exegesis of the New Testament and its Socio-historical Context	Reality and Knowledge
Church History: The Reformation	Introduction to Interpretation of the Old Testament and the Pentateuch	Biblical Fundamentals of Catechetics
Introduction to Theology		
SECOND SEMESTER		
Year level 1	Year level 2	Year level 3
Introduction to Academic Literacy	Dogmatics: Christology to Eschatology	Dogmatics: Calvin's Institutes
Fundamentals of Church and Dogma History	Prophetic Literature	Introduction to Theological Hermeneutics
The Synoptic Gospels	Acts, the General Epistles, Hebrews and the Pauline Epistles	The Reformation and Modern Church and Dogma History
Narrative Text: The Early Prophets	History and Philosophy	Elements of Liturgics
Bible Counselling		Pastoral Treatment of Stress, Trauma and Inner Healing
Fundamentals of Ethics		
<b>Total credits: 404</b>		

# 3.

## BTh in Theological Foundations

The programme provides an introduction and overview of Christian Theology and Ministry, focusing on Systematic Theology, Ethics and Church and Dogma History. Successful completion of this programme provides articulation possibilities to HONS BA in Theology.



FIRST SEMESTER		
Year level 1	Year level 2	Year level 3
Greek Language Competence	Dogmatics: From the Doctrine of Scripture to the Doctrine of Sin	Dogmatics: Modern Theologians and their Value for Practical Ministry
Biblical Hebrew Linguistic Skills	Human Rights	Contemporary Ethical Themes
Introduction to the New Testament: History and General Canonics	The Relationship between Mission and Theology	South African Church History
Introduction to the Old Testament: Origin and Structure	Introduction to Exegesis of the New Testament and its Socio-historical Context	Introduction to Interpretation of the Old Testament and the Pentateuch
Latin for Everyone	Early Christian and Mediaeval Churches	Reality and Knowledge
Introduction to Theology		
SECOND SEMESTER		
Year level 1	Year level 2	Year level 3
Introduction to Academic Literacy	Dogmatics: Christology to Eschatology	Dogmatics: Calvin's Institutes
Fundamentals of Church and Dogma History	The Reformation and Modern Church and Dogma History	Introduction to Theological Hermeneutics
The Synoptic Gospels	Acts, The General Epistles, Hebrews and the Pauline Epistles	Church History: The Reformation
Narrative Text: The Early Prophets	History and Philosophy	Prophetic Literature
Biblical Counselling		Mission as an African Initiative
Fundamentals of Ethics		
<b>Total Credits: 412</b>		

# 4.

## BTh

This programme is only available to students who complete their studies at an Open Distance Learning Centre of the NWU. The programme provides a basic introduction and overview of the Christian Theology and articulation possibilities to the Hons BA in Theology.



FIRST SEMESTER		
Year level 1	Year level 2	Year level 3
Greek Language Competence or Greek Grammar 1	Select any 5 of these: <ul style="list-style-type: none"> <li>• Dogmatics: From the Doctrine of Scripture to the Doctrine of Sin</li> <li>• Human Rights</li> <li>• Greek Grammar II and Semantics</li> <li>• Scriptural Fundamentals of Homiletics</li> <li>• Catechetics: Creative Bible Instruction</li> <li>• The Relationship between Mission and Theology</li> <li>• Introduction to Exegesis of the New Testament and its Socio-historical Context</li> <li>• Introduction to Interpretation of the Old Testament and the Pentateuch</li> <li>• Development of Pastoral Skills</li> <li>• Biblical Hebrew Grammar III</li> </ul>	Reality and Knowledge Select any 3 of these: <ul style="list-style-type: none"> <li>• Greek Translation and Analysis of Texts</li> <li>• Dogmatics: Modern Theologians and their Value for Practical Ministry</li> <li>• Contemporary Ethical Themes</li> <li>• Missionary Apologetics</li> <li>• General Canonic, Pauline Epistles</li> <li>• Interpretation of the Writings (Ketubim)</li> <li>• Pastoral Cases in Counselling</li> <li>• Biblical Hebrew Language Structure and Textual Study</li> </ul>
Biblical Hebrew Linguistic Skills or Biblical Hebrew Grammar 1 and Geographical Context		
Introduction to Academic Literacy		
Introduction to the New Testament: History and General Canonic		
Introduction to the Old Testament: Origin and Structure		
Church History: The Reformation		
Introduction to Theology		
SECOND SEMESTER		
Year level 1	Year level 2	Year level 3
Introduction to Academic Literacy	History and Philosophy	Dogmatics: The Institution of Calvin
Fundamentals of Church and Dogma History	Select any 3 of these: <ul style="list-style-type: none"> <li>• Dogmatics: Christology to Eschatology</li> <li>• Greek Composition</li> <li>• Mission as an African Initiative</li> <li>• Acts, the General Epistles, Hebrews and the Pauline Epistles</li> <li>• Prophetic Literature</li> <li>• Biblical Hebrew Grammar IV and Conceptual Language System</li> </ul>	Introduction to Theological Hermeneutics  Select any 3 of these: <ul style="list-style-type: none"> <li>• Greek Translation and Analysis of Texts</li> <li>• The Reformation and Modern Church and Dogma History</li> <li>• Elements of Liturgics</li> <li>• Intercultural Communication of the Gospel</li> <li>• Key Themes of Revelation History, the Johannine Books</li> <li>• Old Testament: Special Themes; the Old Testament and Practical Ministry</li> <li>• Pastoral Treatment of Stress, Trauma and Inner Healing</li> <li>• Biblical Hebrew Textual Study and Comparative Textual Study</li> </ul>
The Synoptic Gospels or Biblical Hebrew Grammar 2		
Narrative text: The Early Prophets or Greek Grammar 2		
Biblical Counselling		
Fundamentals of Ethics		
<b>Total Credits: 412</b>		

# HONS BA in THEOLOGY



## Admission Criteria

Admission requirement for this programme is a BTh degree with an average of at least 60%. Students who have completed a B degree that includes sufficient theological subjects can apply for B status in Theology, which gives the student access to the programme Hons BA in Theology. If a student's B degree does not include theological subjects, he/she can enroll for the B-Status in Theology. After successful completion of the B-Status exam, the student can enroll for Hons BA in Theology.



## Duration

The minimum duration for fulltime study is one year, and the maximum duration is two years. The minimum duration for part-time study is two years, and the maximum duration is three years.



## Learning Support Centres

If you prefer to enroll via an Learning Support Centre, you will receive contact facilitation by a NWU appointed facilitator.



## Cost

Email [puk-studyfees@nwu.ac.za](mailto:puk-studyfees@nwu.ac.za) or phone 018 299 2667/8/9 for a quote

First semester	Second semester
<b>Compulsory modules</b>	<b>Compulsory modules</b>
Interpretation and Study of the Old Testament, with Special Attention to the Revelation History (Theology) of the Old Testament	Introduction to New Testament Exegesis and the Socio-historical context of the NT
Dogmatics: Fundamentals of Dogmatics, Doctrine of Scripture to the Doctrine of Sin, Christology and Eschatology	Mini-dissertation
Research Methodology	
<b>Electives (Select any 2 modules)</b>	<b>Electives (Select one of the following modules)</b>
General and Specific Counselling	Liturgical Practice
Human Rights	Perspectives on Missiology
General Church and Dogma History	
<b>Total Credits: Min: 136, Max: 144</b>	



## Curriculum

The Hons BA is an advanced degree in Christian Theology, which builds on a first degree in Theology / Biblical Studies or an equivalent qualification. Successful completion of the programme provides articulation possibilities to an MA in Theology.

## **APPLICATION**

Applications close in September of the previous year. A student can also apply to start in the second semester. Apply in March to start. Application forms are available on the NWU's website.

## **REGISTRATION**

Students whose applications were successful, register annually through the Unit for Open Distance Learning. The process involves payment of the prescribed registration fee, and completing the registration forms, with the necessary signatures. The registration form must be submitted at the registration section of the Unit for Open Distance Learning, or at the registration office of a Open Distance Learning Centre. A proof of registration will be issued to the student by the Unit for Open Distance Learning.

## **CALL CENTRE AND CUSTOMER CARE**

Open Distance Learning Unit

Tel: 018 285 5900

Fax: 018 299 4885

E-mail: [distancepotch@nwu.ac.za](mailto:distancepotch@nwu.ac.za)

Web: <http://www.nwu.ac.za/>

and click on Open Distance Learning link.





# NORTH-WEST UNIVERSITY

It all starts here ...

## Who we are?

The NWU is a unitary multi-campus institution with campuses spread across two provinces. These are the Potchefstroom and Mafikeng campuses in North West province and the Vaal Triangle campus in Gauteng. The Institutional Office (head office) is situated in Potchefstroom in close proximity to the Potchefstroom Campus.

## Our vision

The vision of the NWU is to be a “pre-eminent university in Africa, driven by the pursuit of knowledge and innovation”.

THE SPIRIT OF  
**THE NORTH-WEST UNIVERSITY IS REFLECTED** IN THE WAY IT  
**UNLOCKS**   
**THE FUTURE** FOR PEOPLE AND  
ENABLES THEM TO MAKE  
THEIR **DREAMS COME TRUE**

The NWU is the

**2<sup>nd</sup>**  
largest

university in the country with more than 74 000 enrolled students.

**BIGGEST** open distance learning programme in Education in the country

## WE TAKE PRIDE IN OUR



Undergraduate pass rate of 88,2%



Formidable teaching staff



140 researchers with a NRF rating



150 community outreach programmes



Multilingualism embedded in our campuses with interpreting services in classrooms